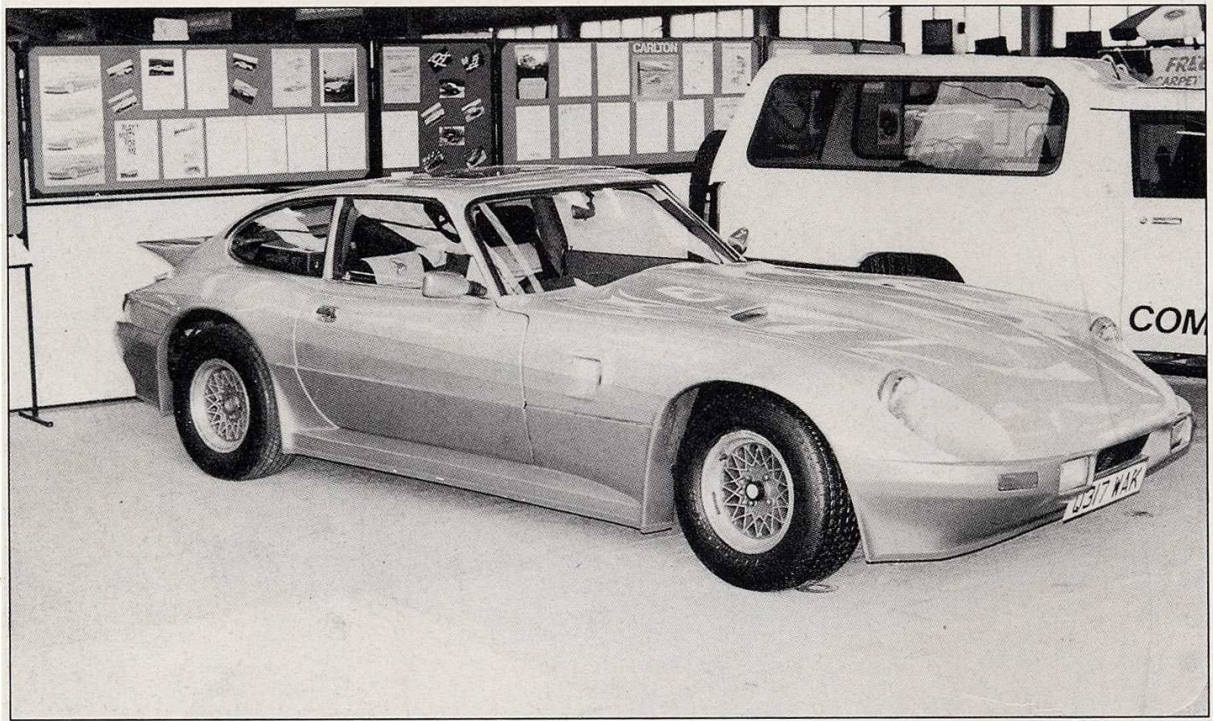


Carlton Carrera



COMPANY PROFILE: Carlton Automotive operates from 5000 sq ft premises in Royston, Barnsley and is run by Stuart Allatt and Dave Peasant. They are both engineers and have long-standing experience in the production of kit cars. The company specialises in GRP work, which they undertake for various companies in the automotive field and for industry in general. Their kits have always had a reputation for solid quality and good styling and that explains why more than 450 examples have been sold to date of the two models produced.

MODEL PROFILE: The Carrera made its debut at the 1985 Component Car Show and must be regarded as one of the mainstream 'muscular' coupes available in kit form. It combines the best visual features of the Datsun 280Z, the Capri and perhaps the Porsche Turbo all rolled into one. An opening rear hatch provides daily practicality and 2+2 seating is taken to full four-seater in the Capri/Jaguar based variant. Also, it is now available in Cabriolet form with a fully retracting hood.

DONOR VEHICLE: Depending on which basis you choose, there are usually three main donor vehicles to consider. From the Ford Cortina Mk 3/4/5, take the complete front cross-member, engine, gearbox, propshaft, rear axle, rear suspension, steering, wiring loom, dashboard, instruments, heater/ventilation system and wiper motor assembly. From an MGB, you'll need the rear window glass. Don't worry, though, Carlton expect to help with the sourcing of donor vehicles if necessary.

COMPONENT PACK: Standard specification of the basic package includes a deep box-section chassis complete with additional backbone rails to provide high torsional rigidity, side impact rails for passenger protection and a substantial internal roll-over frame. All panels are supplied in uncoloured GRP and consist of the main bodyshell, doors, rear hatch and bonnet. There are three different pack prices depending on what kind of basis is required. The Cortina-based version comes in at £1999, the Jaguar-based option is £2299 and the Cortina/Sierra variant is top of the range at £2399. The Cabriolet version is available for any donor option. Add £600 to the kit price for this option. All prices plus VAT.

OPTIONS AND EXTRAS: Extras available from Carlton include a glass sunroof, £100 fitted, gas struts for the bonnet and hatch £125 (these both include the appropriate fitting kits). A rear valance costs £110 not fitted, £160 fitted, a tow bar is £45 not fitted, and the fitting of boot, bonnet and doors costs £195.

For full details send £2 to:

Carlton Automotive WKG Ltd, Midland Works, Filey Avenue, Royston,
Barnsley S71 4PZ. Tel: 0226 722761